

Toy Poodle

Poodles are very curious and active dogs, but are also shy around new people, and love to be spoiled. They are extremely clever and are often used as police sniffer dogs, or for hunting for truffles. Poodles are divided into four types based on size: standard, medium, miniature and toy. This paper craft model is based on the smallest sized poodle, the toy poodle.



● Front



● Side



● Back



*Assembly instructions on pages 1 and 2, and pattern on page 3.

★ Assembly Instructions

- 1) Carefully cut out the parts.
- 2) Fold along the dotted lines, making mountain or valley folds as indicated.
- 3) Follow the order indicated in the instructional diagrams, and attach the parts to assemble.
(Read the Explanation of Symbols for more information.)
- 4) Your paper craft model is finished!

★ Tools

Scissors, glue (We recommend craft glue.)

★ Caution

Keep scissors and glue away from small children.
Be careful not to cut your fingers when using scissors.
Fold the folding lines before gluing.

★ Explanation of Symbols



Cut line



Mountain fold



Valley fold



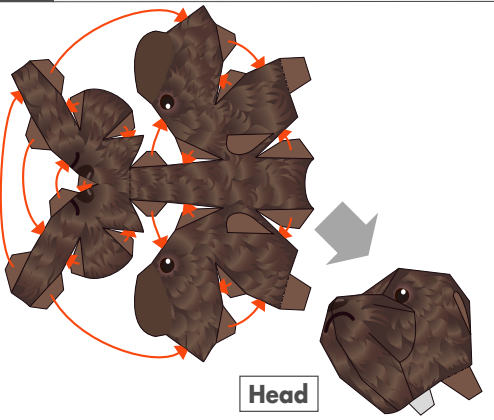
△ **Numbered glue tabs**
Glue the parts together in the order indicated by the numbers.



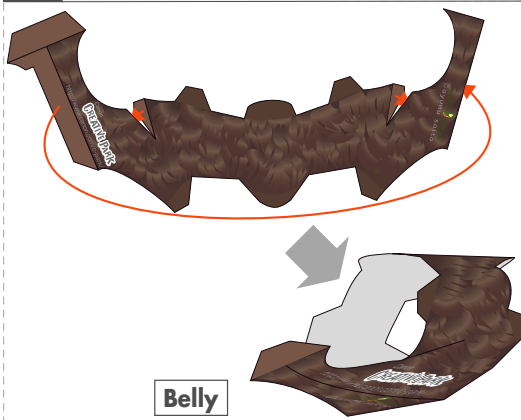
△ **Glue tabs with symbols and part names**
These tabs are to be glued onto the matching parts, which name is indicated on the tab.

★ **Assembling the Toy Poodle**

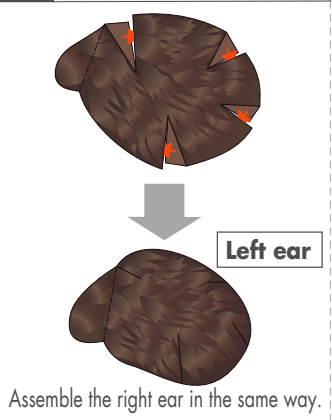
1 Assemble the head



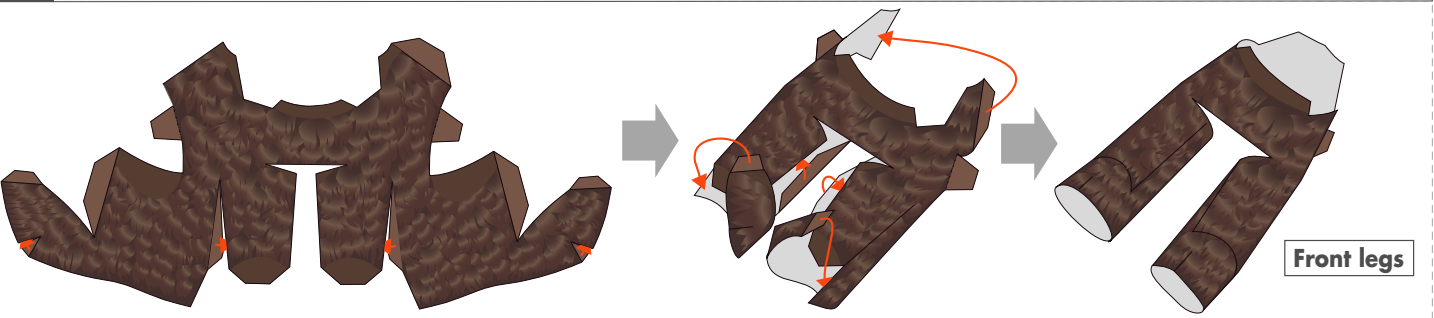
2 Assemble the belly



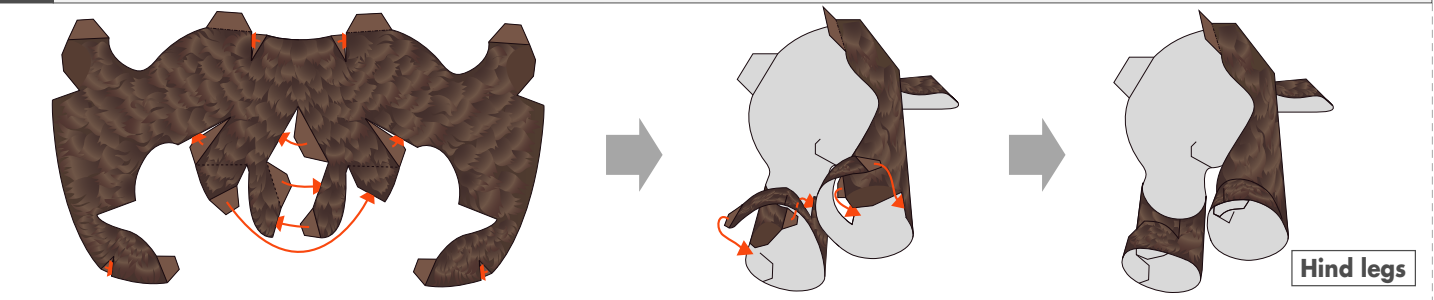
3 Assemble the ears (right and left)



4 Assemble the front legs



5 Assemble the hind legs



6 Assemble the whole body

