

Crocodile (Nile crocodile)

Reptilia Crocodylia Crocodylidae Crocodylus
Length: Up to 6 m Weight: Up to 1 t
Habitat: Rivers, lakes, ponds and marshes in Africa

*This photo shows a model which uses the optional parts.

Assembly Instructions

1. Carefully cut out the parts.
2. Fold along the dotted lines, making mountain or valley folds as indicated.
3. Attach the glue spots on each part together.
4. Join the parts together to assemble the model.
5. Your Paper craft model is finished.

*Please read the Assembly Instructions carefully before you begin.

Tools



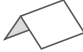





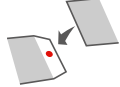


Scissors, Glue (We recommend craft glue.)

How to assemble your model neatly

Scoring along the fold lines in advance with a dried up pen or a ruler with slightly sharp corners will result in a neater model.

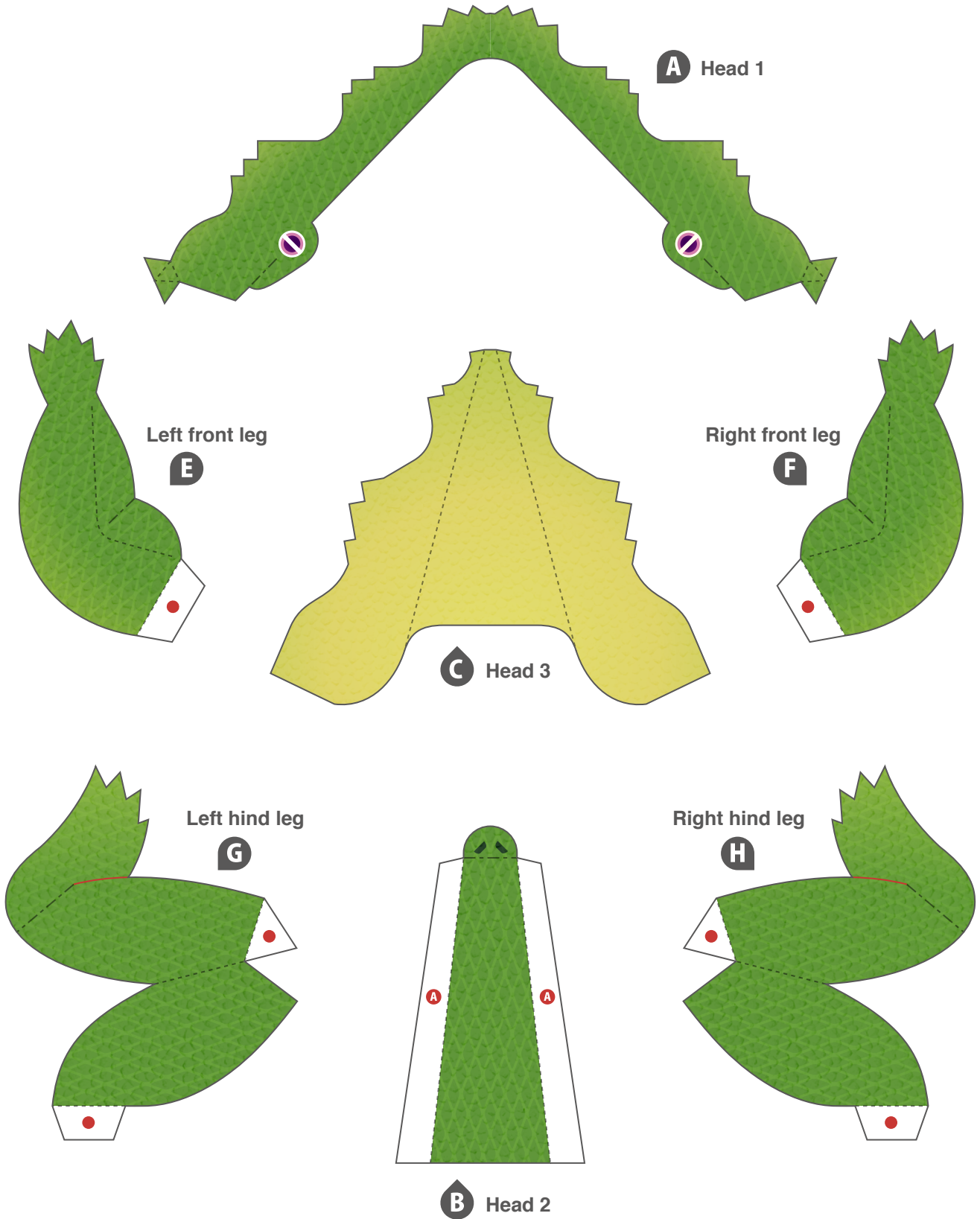
*Be careful not to press too hard as the paper may tear.

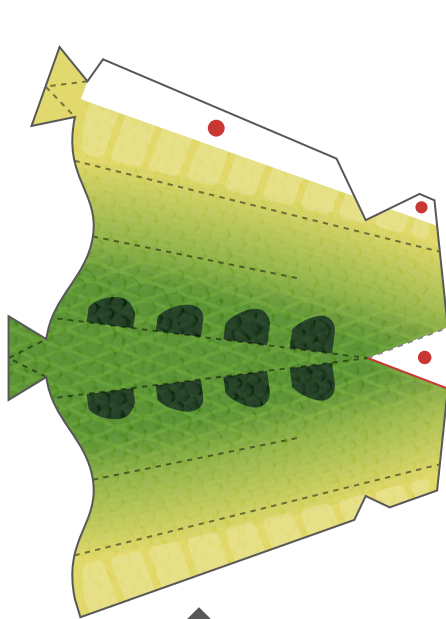
Notation Key

			
	Scissors line		Mountain fold
			
	Cut in line		Valley fold
			
	Glue spot	Glue spot with symbol	
Attach the part that matches the symbol on the glue spot.			

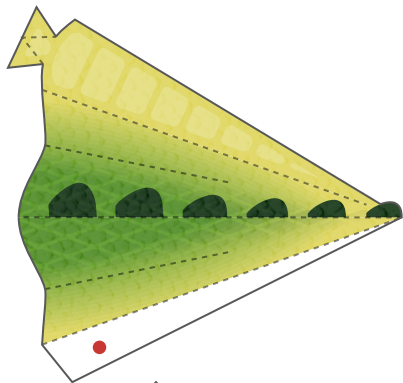
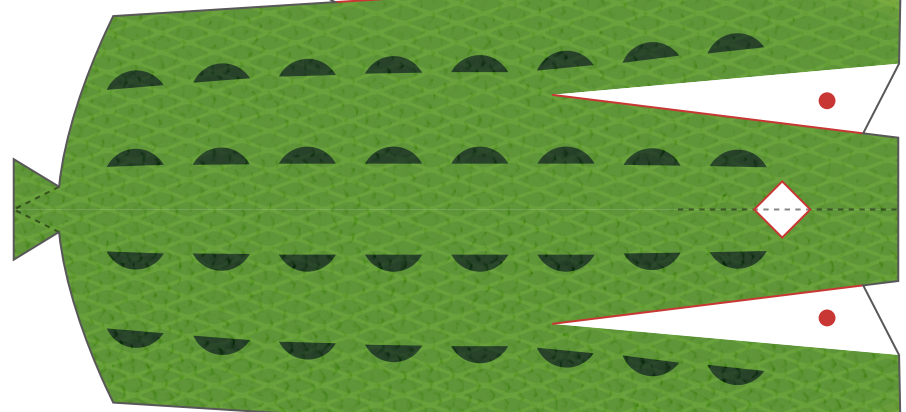
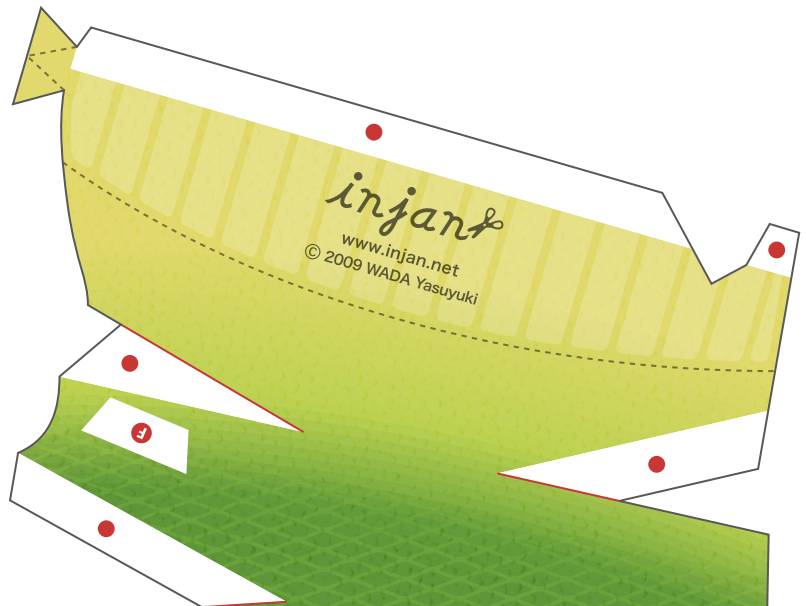
Caution

Keep scissors and glue away from small children.
Be careful not to cut your fingers when using scissors.

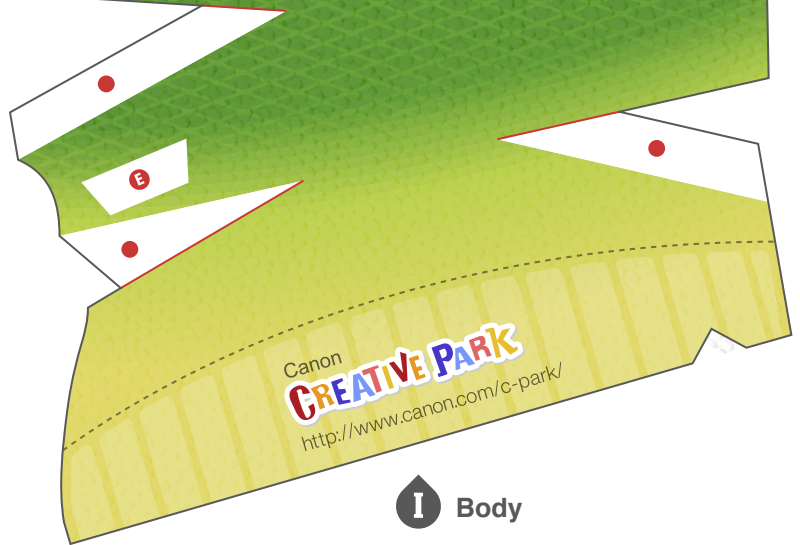




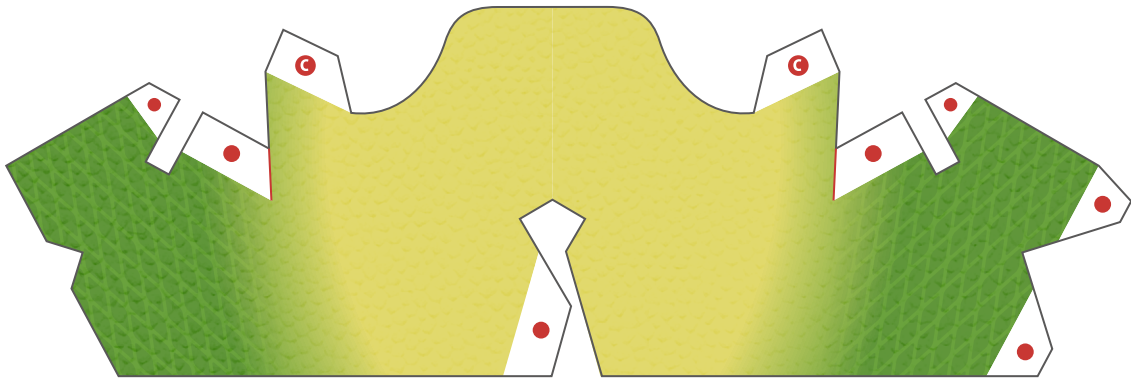
L Tail 3



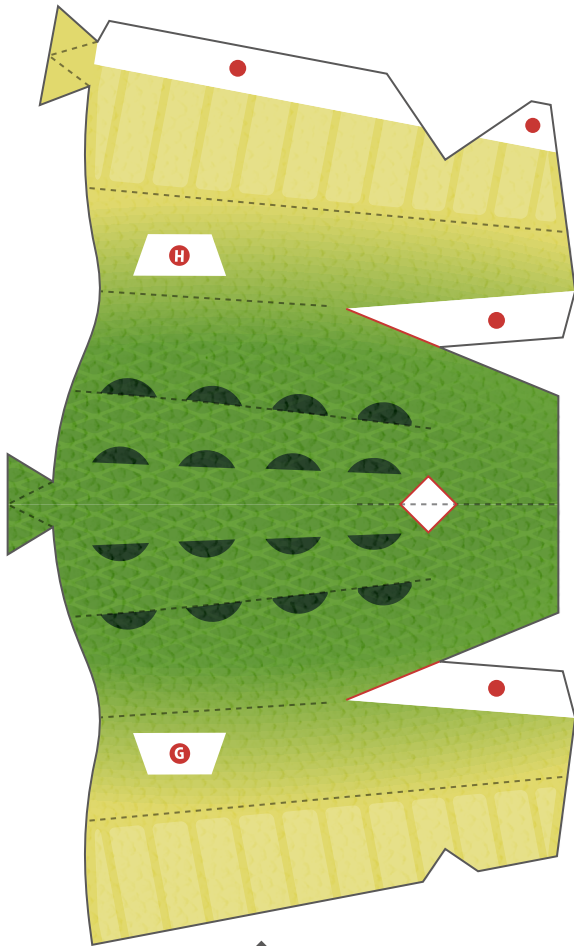
M Tail 4



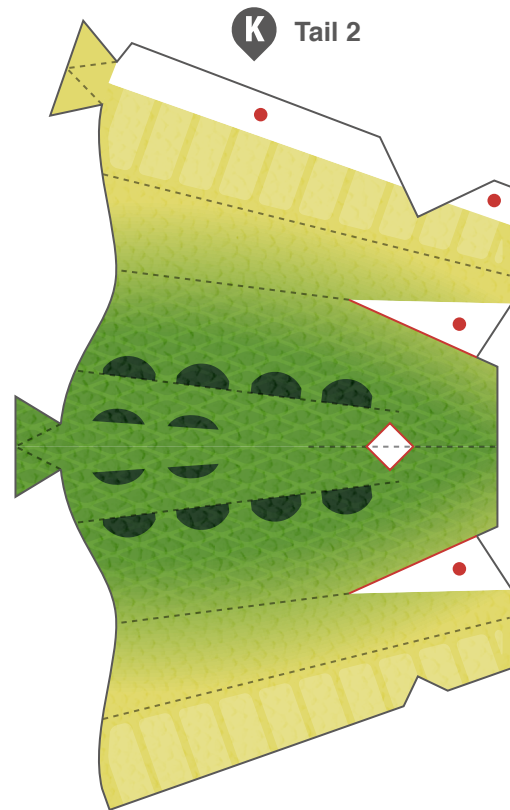
I Body



D Head 4



J Tail 1



K Tail 2

★ Optional parts

Adding the optional parts can make your crocodile look even more realistic.
Use whichever ones you like.

