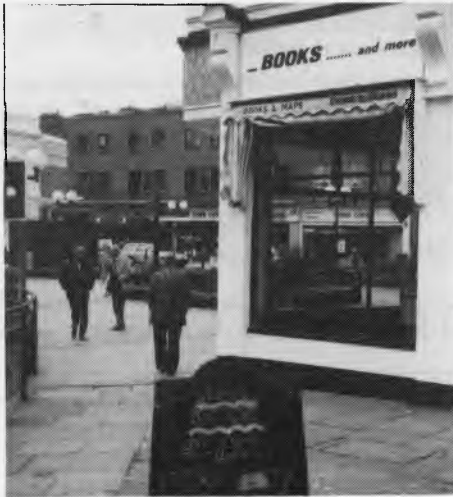


MARKET SQUARE SHOP-WINDOW DISPLAY PROJECT



July 1990 saw the announcement in the local Press that the District Council was initiating a scheme for the improvement of Dover's main street by allowing charitable organisations to use empty shop windows at a peppercorn rent. The Council, it was reported, would enter into a new agreement with the owners of empty properties allowing them to lease their shop at a moment's notice. As a Society we decided to join the scheme.

At first we thought in terms of the Christmas period, then March 1991. Both deadlines came and went without success, though not for want of trying, for a considerable amount of preparatory work had been done by way of getting a suitable team together to implement the project. May 1st seemed to suggest itself as a new objective but the chances of success were slender. It certainly

concentrated the mind and indeed heralded a change of fortune.

The premises of Dickensian fame in the Market Square became available through the good offices of the owner who warmed to the idea immediately. We had just a week to get it in place! We would have to modify drastically our more ambitious plans already in being and move. A succession of lucky breaks and marvellous co-operation ensued.



The District Council and Museum both agreed to take a window each flanking our own facing Castle Street. The ready help we received from the Museum was invaluable.

Sunday afternoon in April saw a strong working party of members thoroughly cleaning the shop and windows ready for the display. More than a touch of humour pervaded the atmosphere! The display was installed the following day - that of the 29th April. A little exhausted, we breathed a sigh of relief that we had got there we were not sure how! At least there was one less empty shop window in town.

The display comprises photographs, press cuttings and Society information depicting the Society's objectives, meetings, social and cultural events along with some of its achievements.

168 Our Civic Trust Award gained in 1990 has a central position and the whole makes for an attractive and professional presentation.

Every few weeks curling photographs especially have required attention but we have largely been able to maintain the high standard set by our designer, Philomena Kennedy.

The display will continue for as long as possible as another Society contribution towards 'backing Dover'.

JOHN OWEN

Chairman, Projects Committee 27.6.91

The Society acknowledges with thanks the willing help of Mr & Mrs John Wilkins, the owners of the premises, without which this project would not have succeeded.

Reviews

Exhibitions at Dover Museum

DOVER – A PORT IN A STORM

5th APRIL — 12th MAY 1991

Photography by JANINE WIEDEL

PHILOMENA KENNEDY

At first sight the black and white of this exhibition makes an austere impact. The monochrome is enriched by the full range of tones from near whites to rich darks and solid blacks, enlivened by line and texture. The sheer size of some unframed enlargements emphasises their abstract effect.

A closer look reveals a sharp eye for character, visual dialogue, humour, drama and the unexpected but revealing juxtaposition of shapes.

Ray Pidgeon is shown, suspicious but determined, at his garden gate contemplating the destruction of his much-loved home in the interests of road transport. The founding committee of The Libra Club, apparently united only by physical proximity, is shown with Pat dozing, Joan standing apparently fending off an awkward question or comment and Lulu immersed in reading. Two elderly ladies at the 'Young at Heart' Tea Dance in the Town Hall, demonstrate their high kicks as they stare at the photographer, while two members of the White Cliffs Sequence Dance Club inevitably recall Joyce Grenfield's song about "dancing bust to bust." A TIR trucker crouches to eat a snack, from a compact 'kitchen cabinet' slung beneath his lorry, at the Eastern Docks. A standing figure gazes from the deck of a ferry; the foreground horizontals of benches enlivened by trainer-encased feet projecting from largely-invisible recumbent bodies. A couple embrace in a shelter on the Prince of Wales Pier, the man's feet seemingly entangled in the rope which leads to a lifebelt in the foreground. A young boy looks apprehensively into the 'Lost and Found' tent at Dover Hospital Fête which shelters a line of girls in flowery wreaths, laced bodices and gingham skirts.

Drama is evident in the breaking of a huge wave at the Eastern Docks watched by a woman and child bent against the gale and the silhouetted figure of a man on the